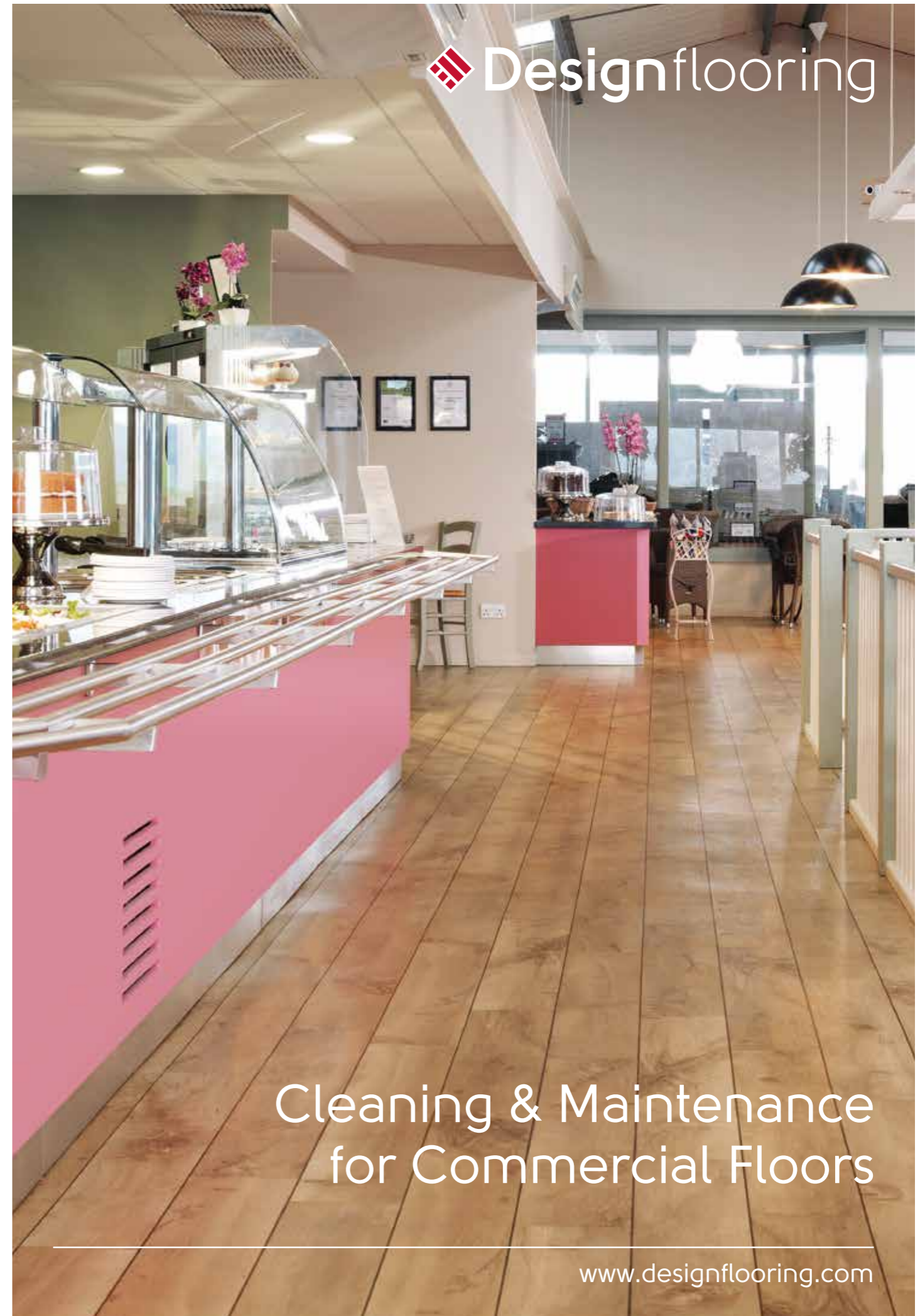


Maintenance advice

- All hard floors can be slippery when wet. Take extra care when cleaning and ensure the floor area is allowed to dry completely before use. During periods of wet weather, it may be necessary to put down extra matting to prevent water from being brought in from outside.
- Use entrance matting approximately two paces wide to prevent grit and other substances from scratching the floor. Ensure they are cleaned on a regular basis to maintain their effectiveness.
- Mop up spillages straight away to avoid slips and staining.
- Avoid using aerosol sprays or silicone-based products, as these can make the floor slippery.
- We recommend using Designflooring cleaning products, as other products may contain agents that can damage resilient floor surfaces.
- Sliding or dragging furniture or other objects across the floor can scratch your floor. Use load bearing castors to prevent indentation from heavy furniture or appliances.
- Rubber can permanently stain vinyl floorcoverings. Avoid using rubber backed mats, rubber furniture feet or rubber wheeled castors.
- Take care when using vacuum cleaners, as some may not be suitable for working with vinyl floors. Ensure there are no sharp edges or parts where grit can become embedded, as these may scratch the floor.
- If surface scratching does appear, it is important to locate and address the cause of the problem. The appearance of scratching can be improved by following stages 2 and 3 using **Designflooring Remove** and **Designflooring Commercial Refresh**.
- Accidental damage can occur, and while using **Designflooring Remove** and **Refresh** may improve the look of the floor, replacing a tile or plank may be preferable.

For further information on the maintenance of your floor,
please contact our Technical Services Team:

Designflooring, Crab Apple Way, Vale Park, Evesham, Worcestershire WR11 1GP UK
Telephone: 00800 777 33 222 Email: technical@designflooring.co.uk



Cleaning & Maintenance
for Commercial Floors

Designflooring floors are very hardwearing, but as with any flooring, they need to be looked after and can be scratched by grit and other sharp objects. However there are many ways to protect your Designflooring floor and prevent damage. We recommend following our Cleaning & Maintenance instructions and reading our Maintenance Advice for helpful hints and tips on how to look after your floor.

Make sure you use 'Wet Floor' signs to indicate the area being cleaned throughout the cleaning process.



Designflooring Clean
5 litres
1250m²



Designflooring Remove
5 litres
250m²



Designflooring Refresh
5 litres
90m²

Maintaining your floor 1

The floor should be cleaned regularly, though the frequency will depend upon the level of traffic across the floor and the amount of dust and dirt transferred from the surrounding environment.



1. Remove loose dust and dirt from the floor using a soft brush or dust mop.



2. Dilute **Designflooring Clean** in accordance with the label instructions.



3. Liberally apply the cleaning solution over the entire floor using a clean mop, then soak up the cleaning solution using a damp (not wet) mop and leave to dry.



4. Thoroughly clean the mop with cold running water.



Designflooring Clean can also be used with automatic cleaning appliances (e.g. scrubbing machines), especially for larger areas or for the removal of stubborn dirt.

Refreshing your floor 2 3

Over time, heavy traffic will wear at the surface of your Designflooring floor. To restore your floor, we recommend the use of **Designflooring Remove** and **Designflooring Commercial Refresh**.

Before applying **Designflooring Remove**



1. Remove all free standing objects from the floor
2. Vacuum or clean any entrance matting or rugs and set aside
3. Remove loose dust and dirt from the floor using a soft brush or dust mop.

Applying **Designflooring Remove** using a Rotary Scrubber



1. Mix **Designflooring Remove** in accordance with the label instructions and pour into rotary scrubber machine.
2. Scrub the floor using the rotary scrubber fitted with a red scrubbing pad. For the edges of the floor and hard to reach areas, use a white scrubbing pad fitted to the end of an applicator.

Applying **Designflooring Remove** using a Mop and Scrubbing Pad



1. Mix **Designflooring Remove** in accordance with the label instructions.
2. Apply cleaning solution to the floor using a mop, working in an area no larger than 5m x 5m (16' x 16') at a time.
3. Allow the solution to remain on the floor for approximately 10 minutes, not allowing it to dry.
4. Scrub the floor using a white scrubbing pad fitted to the end of an applicator.

Removal of **Designflooring Remove**



1. Remove all residue with a wet vacuum or mop, and rinse the floor using clean water.
2. After the floor has dried, check all residue has been removed.
3. Equipment should be cleaned in cold running water and stored safely.

Applying **Designflooring Commercial Refresh**

When using **Designflooring Commercial Refresh**, avoid where possible, strong sunlight and draughts and ensure all under floor heating is switched off before starting work.



1. Using a lint free mop, apply undiluted **Designflooring Commercial Refresh** in a thin even coat using overlapping strokes. Where possible, work parallel to the main light source e.g. window.
2. Allow the floor to dry for approximately 30 minutes.
3. Apply a second coat of **Designflooring Commercial Refresh**, working in the opposite direction to the first coat.



4. Allow the floor to dry for at least six hours, or preferably overnight.
5. Thoroughly clean the mop with cold running water.